

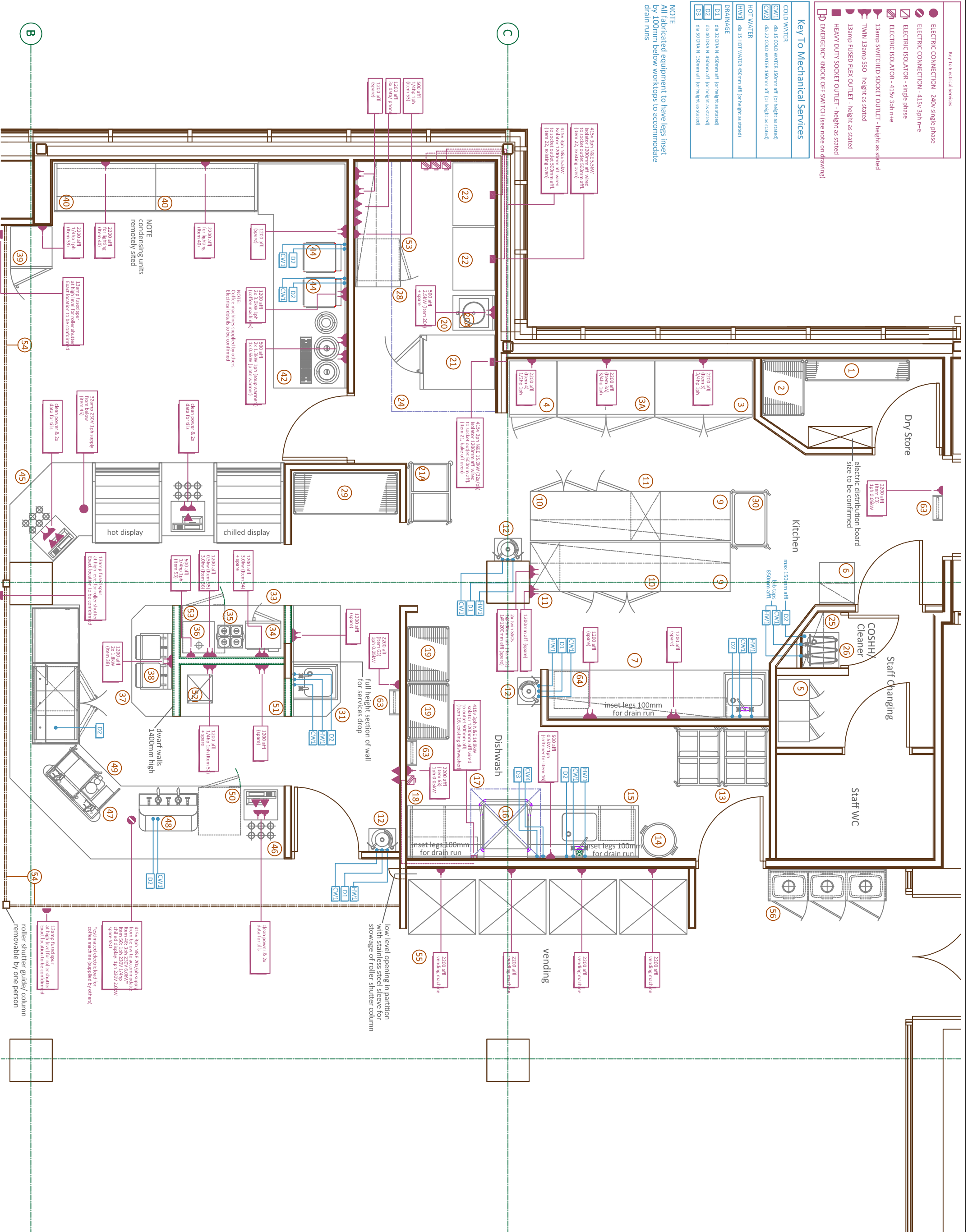
**Equipment Schedule**

Item	Qty.	Description
1	1	Shelving unit, wire
2	1	Shelving unit, wire
3	1	Existing freezer - allowance for servicing
3A	1	Existing freezer - allowance for servicing
4	1	Three tier racks
5	3	Goods receipt table & overhead
6	1	Work table with cupboards below & housing for 3kW (square number)
7	2	Work table with overhead
8	2	Work table with overhead
9	2	3 door refrigerated counter
10	2	Wash hand basins
11	2	Wash hand basins
12	2	Wash hand basins
13	2	Wash hand basins
14	1	Existing dishwasher de-aerated & serviced
15	1	Condense canopy excluding ductwork & fan
16	1	Hot filling unit
17	1	Hot filling unit
18	1	Hot filling unit
19	2	4 tier shelving unit
20	1	Low table
21	1	Boiling ring
21A	1	Bake off oven
22	2	Existing bake off ovens
23	2	Existing bake off ovens
24	1	Vanish cabinet, excluding ductwork and fans
25	4	Wall shelf
26	1	Cleaners sink
27	1	Cleaners sink
28	1	Work table & overhead
29	1	4 tier shelving unit
30	1	General purpose trolley
31	1	Work table with sink & cupboards below (square number)
32	1	Work table with sink & cupboards below (square number)
33	1	Work table with sink & cupboards below (square number)
34	1	Work table with sink & cupboards below (square number)
35	1	Hot filling unit
36	1	Hot filling unit
37	1	Existing potato boiler
38	1	Work table
39	1	Panini contact grill
40	2	Bottle cooler - Free issue (square number)
41	-	Multitask (display remote refrigeration)
42	-	Granite topped beverage counter
43	2	Cup stand
44	2	Granite topped beverage counter
45	1	Granite topped beverage counter
46	1	Granite topped beverage counter
47	1	Sprind to front of armchairs
48	1	Espresso/coffee machine - 3 group
49	1	Coffee machine/undercounter
50	1	Refrigerator, undercounter
51	1	Work table
52	1	Milk dispenser
53	1	Refrigerator, undercounter
54	1	Refrigerator, undercounter
55	1	Refrigerator, undercounter
56	1	Refrigerator, undercounter
57	1	Refrigerator, undercounter
58	1	Refrigerator, undercounter
59	1	Refrigerator, undercounter
60	1	Refrigerator, undercounter
61	1	Refrigerator, undercounter
62	1	Refrigerator, undercounter
63	3	FN Tapo
64	1	Safe (locked to floor)

- Key To Electrical Services**
- ELECTRIC CONNECTION - 240V single phase
  - ELECTRIC CONNECTION - 415V 3ph r+n-e
  - ⊘ ELECTRIC ISOLATOR - single phase
  - ⊘ ELECTRIC ISOLATOR - 415V 3ph r+n-e
  - ⊘ 13amp SWITCHED SOCKET OUTLET - height as stated
  - ⊘ 13amp SWITCHED SOCKET OUTLET - height as stated
  - ⊘ TWIN 13amp SSO - height as stated
  - ⊘ 13amp FUSED FLEX OUTLET - height as stated
  - ⊘ HEAVY DUTY SOCKET OUTLET - height as stated
  - ⊘ EMERGENCY KNOCK OFF SWITCH (see note on drawing)

- Key To Mechanical Services**
- CW1 dia 15 COLD WATER 150mm a/f (or height as stated)
  - CW2 dia 22 COLD WATER 150mm a/f (or height as stated)
  - HW1 dia 15 HOT WATER 40mm a/f (or height as stated)
  - HW2 dia 22 BRAIN 450mm a/f (or height as stated)
  - D1 dia 40 BRAIN 450mm a/f (or height as stated)
  - D2 dia 22 BRAIN 150mm a/f (or height as stated)
  - D3 dia 50 BRAIN 150mm a/f (or height as stated)

**NOTE**  
All fabricated equipment to have legs inset by 100mm below worktops to accommodate drain runs



**Holmes Catering Group**

Holmes Catering Equipment Ltd, KCE Food and Retail Concept Ltd  
Sutton House, The Industrial Estate, Full Sutton, York, YO1 1HS  
Tel: 01904 272000 Fax: 01904 272001 Email: sales@holmes-catering.co.uk Website: www.holmes-catering.co.uk

Project / Client  
**THE UNIVERSITY of York**  
Freshers Cafe

**Equipment Schedule**

Item	Qty.	Description	SR
D	5, 7, 11	Item 4 revised to fridge. Power added for roller shutters	SR
C	5, 7, 11	Equipment layout revised	SR
B	30, 6, 11	Walls updated to Adec's drawing "A4100 001C Proposed Ground Floor Plan" layout revised	SR
A	9, 6, 11	Layout revised	SR

Rev. Date Details By

Drawn: SJR Date: 27.5.11 Scale: 1:25@A1

Drawing Number: S-8527-1

Project / Client: THE UNIVERSITY of York  
Freshers Cafe

Title: Catering Facilities Services Layout